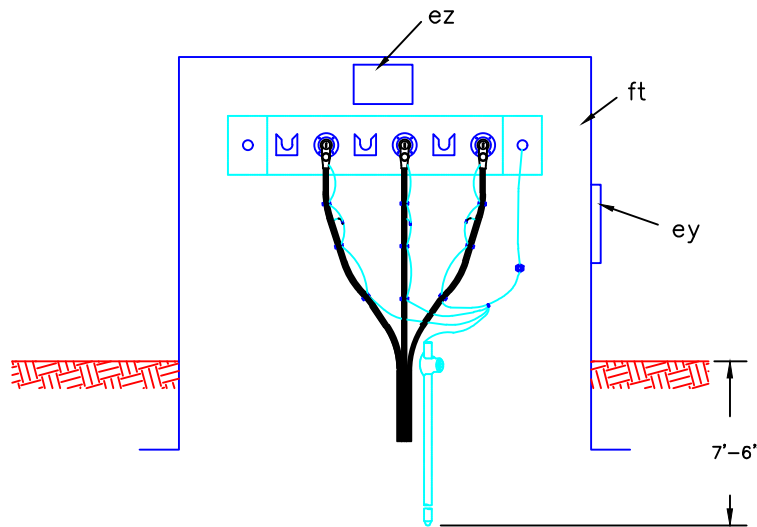


**NOTES:**

1. SECTIONALIZING CABINETS SHOULD BE CENTERED ON THE PROPERTY LINE IN THE ORIENTATION SHOWN ON THE SITE LAYOUT DRAWING SUPPLIED BY THE ENGINEER.
2. CONDUITS SHOULD BE ARRANGED IN THE CABINET SO THAT THEY EXTEND FROM THE CABINET IN THE DIRECTION THEY ARE CLOSEST TO (IE, CONDUITS ON THE LEFT SIDE SHOULD GO TO THE LEFT AND RIGHT SIDE TO THE RIGHT).
3. CONDUITS SHALL NOT EXTEND BEYOND THE DIMENSIONS SHOWN.



**NOTE:**

1. THE FOLLOWING UNITS/ASSEMBLIES ARE NOT PART OF THIS UNIT. SPECIFY SEPARATELY:
  - A. MULTIPOINT TERMINATION AND OTHER ACCESSORIES
  - B. FUSED OR NON-FUSED LOADBREAK ELBOWS
  - C. GROUNDING ASSEMBLY UM48-1 OR OTHER
  - D. PAD OR SLEEVE (IF REQUIRED)
2. SPECIFY CONDUIT OR U-GUARD AS NEEDED TO EXTEND AT LEAST ONE FOOT BELOW GRADE.
3. INSTALL "CAUTION" SIGN ON OUTSIDE SURFACE OF ENCLOSURE AND "DANGER" SIGN INSIDE ENCLOSURE.

ITEM NO.	MATERIAL	SINGLE PHASE SECTIONALIZING CABINET	
ft	1 Single phase enclosure		
ez	1 Sign, danger		
ey	1 Sign, caution		
		2/15/17	UM3-1